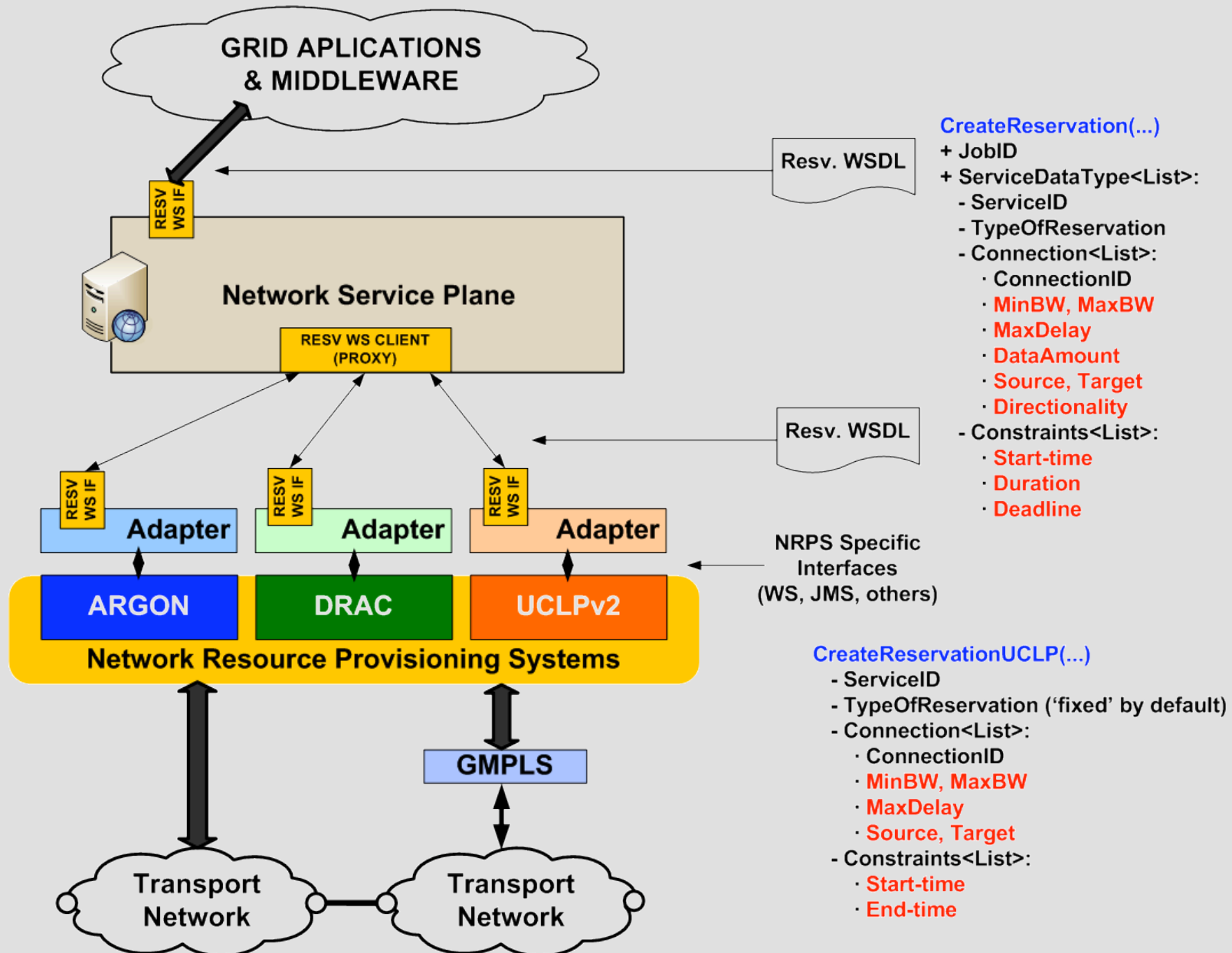




PHOSPHORUS - WP1 domains interface development

Sergi Figuerola WP1 (sergi.figuerola@i2cat.net)
7th GLIF meeting, September 2007 Prague

Reservation Handling in Phosphorus



Reservation WSDL (1)



```
<?xml version="1.0" encoding="UTF-8"?>
<wSDL:definitions
  name="Reservation-WS" xmlns:wSDL="http://schemas.xmlsoap.org/wSDL/"
  xmlns:soap="http://schemas.xmlsoap.org/wSDL/soap/"
  xmlns:http="http://schemas.xmlsoap.org/wSDL/http/"
  xmlns:xs="http://www.w3.org/2001/XMLSchema"
  xmlns:soapenc="http://schemas.xmlsoap.org/soap/encoding/"
  xmlns:mime="http://schemas.xmlsoap.org/wSDL/mime/"
  xmlns:wsa="http://www.w3.org/2005/08/addressing"
  xmlns:reservation="http://ist_phosphorus.eu/nsp/webservice/reservation"
  xmlns:ns="http://ist_phosphorus.eu/NSPCommon"
  xmlns:ns1="http://ist_phosphorus.eu/nsp"
  targetNamespace="http://ist_phosphorus.eu/nsp/webservice/reservation">
<wSDL:types><xs:schema>
  <xs:import namespace="http://ist_phosphorus.eu/nsp/webservice/reservation" schemaLocation="Reservation-
  Types.xsd"/>
</xs:schema></wSDL:types>
[...]fault definitions
<wSDL:message name="getFeatures">
  <wSDL:part name="getFeatures" element="reservation:getFeatures"/>
</wSDL:message>
<wSDL:message name="getFeaturesResponse">
  <wSDL:part name="getFeaturesResponse" element="reservation:getFeaturesResponse"/>
</wSDL:message>
[...]cont'd
```

Reservation WSDL (2)



```
<wsdl:message name="createReservation">
  <wsdl:part name="createReservation" element="reservation:createReservation"/>
</wsdl:message>
<wsdl:message name="cancelReservation">
  <wsdl:part name="cancelReservation" element="reservation:cancelReservation"/>
</wsdl:message>
<wsdl:message name="cancelReservationResponse">
  <wsdl:part name="cancelReservationResponse" element="reservation:cancelReservationResponse"/>
[...]others
<wsdl:portType name="networkReservationPortType">
  <wsdl:operation name="getFeatures">
    <wsdl:input message="reservation:getFeatures"
      wsa:Action="http://ist_phosphorus.eu/nsp/webservice/reservation/getFeatures"/>
    <wsdl:output message="reservation:getFeaturesResponse"
      wsa:Action="http://ist_phosphorus.eu/nsp/webservice/reservation/getFeaturesResponse"/>
    [...]faults
  </wsdl:operation>
  <wsdl:operation name="createReservation">
    <wsdl:input message="reservation:createReservation"
      wsa:Action="http://ist_phosphorus.eu/nsp/webservice/reservation/createReservation"/>
    <wsdl:output message="reservation:createReservationResponse"
      wsa:Action="http://ist_phosphorus.eu/nsp/webservice/reservation/createReservationResponse"/>
    [...]faults
  </wsdl:operation>
```

[...] *cont'd*

Reservation WSDL (3)



networkReservationService
networkReservationPortType
http://localhost:8080/

networkReservationPortType		
getFeatures		
input	getFeatures	getFeatures
output	getFeaturesResponse	getFeaturesResponse
UnexpectedFault	UnexpectedFault	UnexpectedFault
InvalidRequestFault	InvalidRequestFault	InvalidRequestFault
OperationNotAllowedFault	OperationNotAllowedFault	OperationNotAllowedFault
isAvailable		
input	isAvailable	isAvailable
output	isAvailableResponse	isAvailableResponse
UnexpectedFault	UnexpectedFault	UnexpectedFault
InvalidRequestFault	InvalidRequestFault	InvalidRequestFault
OperationNotAllowedFault	OperationNotAllowedFault	OperationNotAllowedFault
EndpointNotFoundFault	EndpointNotFoundFault	EndpointNotFoundFault
createReservation		
input	createReservation	createReservation
output	createReservationResponse	createReservationResponse
UnexpectedFault	UnexpectedFault	UnexpectedFault
InvalidRequestFault	InvalidRequestFault	InvalidRequestFault
OperationNotAllowedFault	OperationNotAllowedFault	OperationNotAllowedFault
EndpointNotFoundFault	EndpointNotFoundFault	EndpointNotFoundFault
getStatus		
input	getStatus	getStatus
output	getStatusResponse	getStatusResponse
UnexpectedFault	UnexpectedFault	UnexpectedFault
InvalidRequestFault	InvalidRequestFault	InvalidRequestFault
OperationNotAllowedFault	OperationNotAllowedFault	OperationNotAllowedFault
cancelReservation		
input	cancelReservation	cancelReservation
output	cancelReservationResponse	cancelReservationResponse
UnexpectedFault	UnexpectedFault	UnexpectedFault
InvalidRequestFault	InvalidRequestFault	InvalidRequestFault
OperationNotAllowedFault	OperationNotAllowedFault	OperationNotAllowedFault
completeJob		
input	completeJob	completeJob
output	completeJobResponse	completeJobResponse
UnexpectedFault	UnexpectedFault	UnexpectedFault
InvalidRequestFault	InvalidRequestFault	InvalidRequestFault
OperationNotAllowedFault	OperationNotAllowedFault	OperationNotAllowedFault
cancelJob		
input	cancelJob	cancelJob
output	cancelJobResponse	cancelJobResponse
UnexpectedFault	UnexpectedFault	UnexpectedFault
InvalidRequestFault	InvalidRequestFault	InvalidRequestFault
OperationNotAllowedFault	OperationNotAllowedFault	OperationNotAllowedFault
activate		
input	activate	activate
output	activateResponse	activateResponse
UnexpectedFault	UnexpectedFault	UnexpectedFault
InvalidRequestFault	InvalidRequestFault	InvalidRequestFault
OperationNotAllowedFault	OperationNotAllowedFault	OperationNotAllowedFault
bind		
input	bind	bind
output	bindResponse	bindResponse
UnexpectedFault	UnexpectedFault	UnexpectedFault
InvalidRequestFault	InvalidRequestFault	InvalidRequestFault
OperationNotAllowedFault	OperationNotAllowedFault	OperationNotAllowedFault

Resv. Data Types (must-have for interoperability)



The following parameters are considered for establishing Connections:

```
<xs:complexType name="ConnectionType">
  <xs:sequence>
    <xs:element name="ConnectionID" type="nsp:ConnectionIdentifierType"/>
    <xs:element name="Source" type="nspc:EndpointType"/>
    <xs:element name="Target" type="nspc:EndpointType" maxOccurs="unbounded"/>
    <xs:element name="Directionality" type="xs:int"/>
  </xs:sequence>
</xs:complexType>
<xs:complexType name="ConnectionConstraintType"><xs:complexContent><xs:extension base="nsp:ConnectionType">
  <xs:sequence>
    <xs:element name="MinBW" type="xs:long"/>
    <xs:element name="MaxBW" type="xs:long"/>
    <xs:element name="MaxDelay" type="xs:int" minOccurs="0"/>
    <xs:element name="DataAmount" type="xs:long" minOccurs="0"/>
  </xs:sequence>
</xs:extension></xs:complexContent></xs:complexType>
```

The following parameters are considered for {Fixed,Deferrable,Malleable} Reservations:

```
<xs:element name="StartTime" type="xs:dateTime"/>
<xs:element name="Duration" type="xs:int"/>
<xs:element name="Deadline" type="xs:dateTime"/> (only for Malleable and Deferrable Resvs.)
```

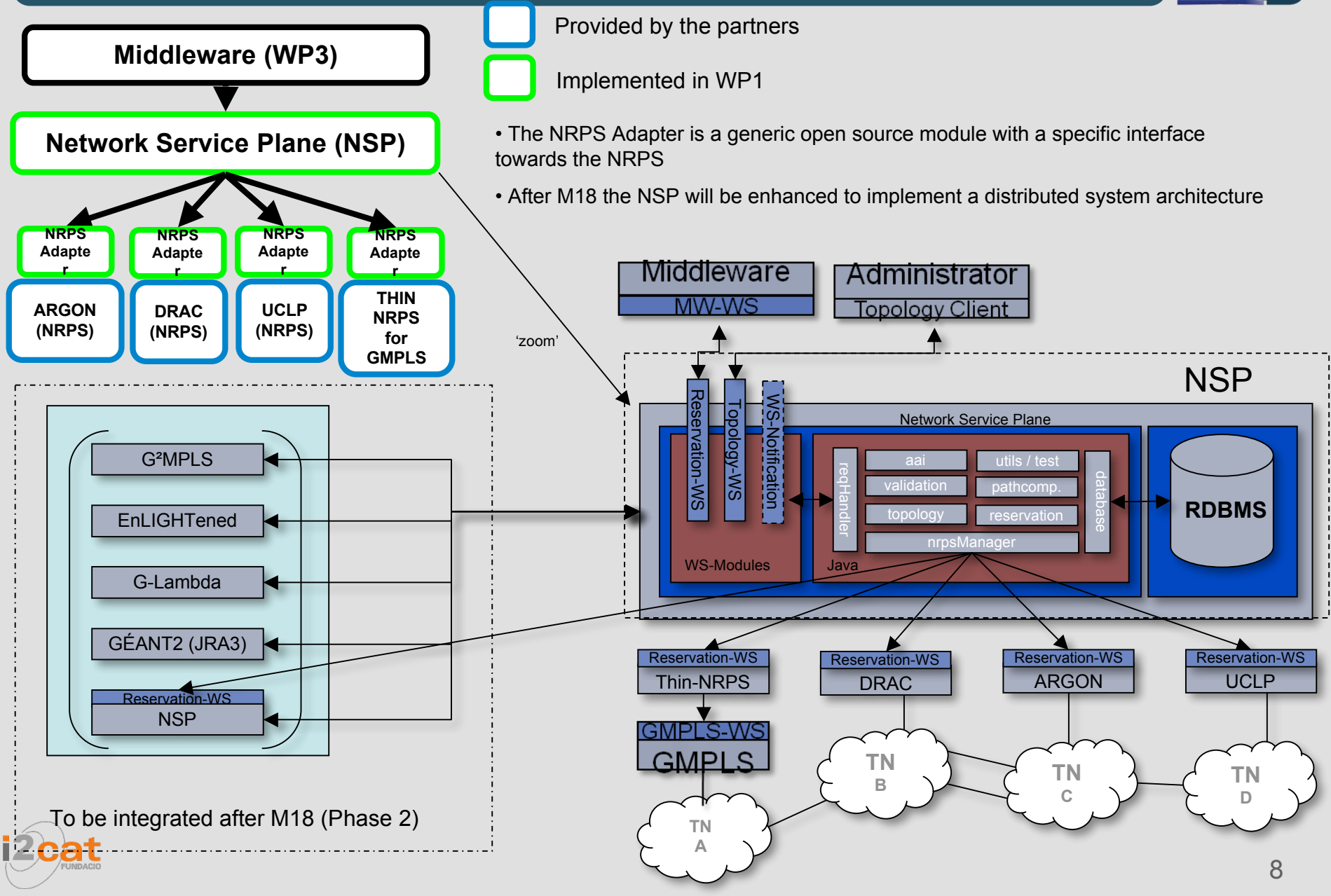
Topology Data Types (must-have for interop.)



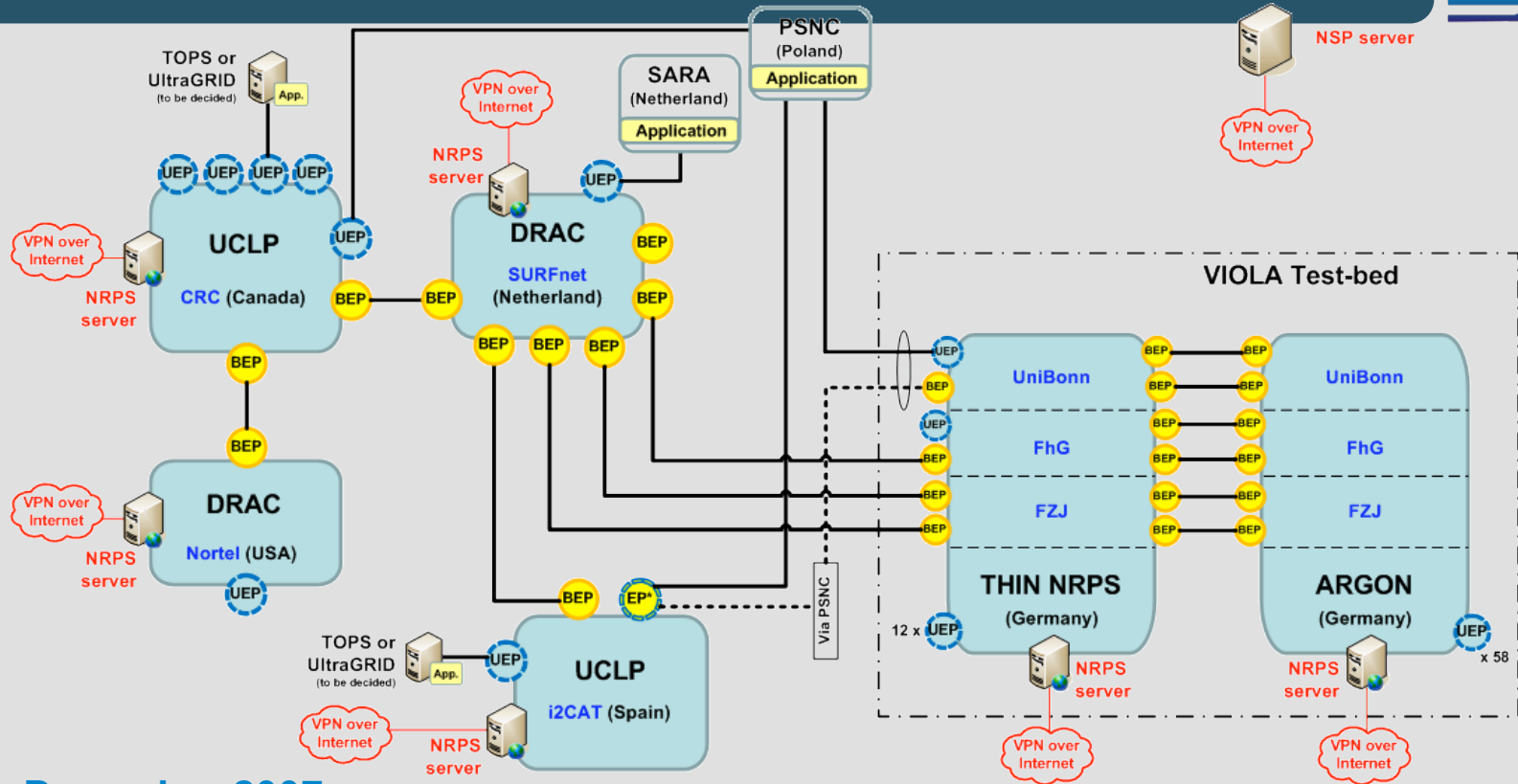
The following parameters are considered for establishing Connections:

```
<xs:complexType name="DomainInformationType"><xs:sequence>
  <xs:element name="DomainId" type="ns1:DomainIdentifierType"/></xs:element>
  <xs:element name="Description" type="xs:string" minOccurs="0"/></xs:element>
  <xs:element name="ReservationEPR" type="xs:anyURI"/></xs:element>
  <xs:element name="TopologyEPR" type="xs:anyURI"/></xs:element>
  <xs:element name="TNAPrefixList" type="ns1:TNAPrefixType" minOccurs="0"
    MaxOccurs="unbounded"/></xs:element>
</xs:sequence></xs:complexType>
<xs:complexType name="EndpointType"><xs:sequence>
  <xs:element name="EndpointId" type="ns1:EndpointIdentifierType"/></xs:element>
  <xs:element name="Name" type="xs:string" minOccurs="0"/></xs:element>
  <xs:element name="Description" type="xs:string" minOccurs="0"/></xs:element>
  <xs:element name="Interface" type="ns1:EndpointInterfaceType" minOccurs="0"/></xs:element>
  <xs:element name="DomainId" type="ns1:DomainIdentifierType" minOccurs="0"/></xs:element>
  <xs:element name="Bandwidth" type="xs:int" minOccurs="0"/></xs:element>
</xs:sequence></xs:complexType>
<xs:complexType name="Link"><xs:complexContent><xs:extension base="y:LinkIdentifierType"><xs:sequence>
  <xs:element name="Name" type="xs:string" minOccurs="0"/></xs:element>
  <xs:element name="Description" type="xs:string" minOccurs="0"/></xs:element>
  <xs:element name="Delay" type="xs:integer" minOccurs="0"/></xs:element>
</xs:sequence></xs:extension></xs:complexContent></xs:complexType>
<xs:complexType name="LinkIdentifierType"><xs:sequence>
  <xs:element name="SourceEndpoint" type="nspc:EndpointIdentifierType"/></xs:element>
  <xs:element name="DestinationEndpoint" type="nspc:EndpointIdentifierType"/></xs:element>
</xs:sequence></xs:complexType>
```

WP1 developments Phase 1 M0-M18



Management architecture. Logical view



Step1 by December 2007

- Add topology information to the system (domain, link, endpoint)
- Create an immediate/advance reservation E2E across different domains/NRPS, with a selected BW and specific duration.
- 1 PHY port corresponds to 1 EndPoint
- No inter-domain BW management
- Use a THIN NRPS to control a GMPLS domain
- The NSP provides also a Path Computation algorithm

Step2 by March 2008

- Finish implementation of all advance reservation features to be able to create an advanced reservation end-to-end connection across domains
- Use embedded AAI in corporation with WP3
- Implement BW management that considers underlying technology
- Integrate the MW-WS

